



Blooming Seasons

Stitched on 28 count lambswool over two threads with two plys of floss.

Stitch Count – 62 x 76

Approximate size – 4 1/2" x 5 1/4"

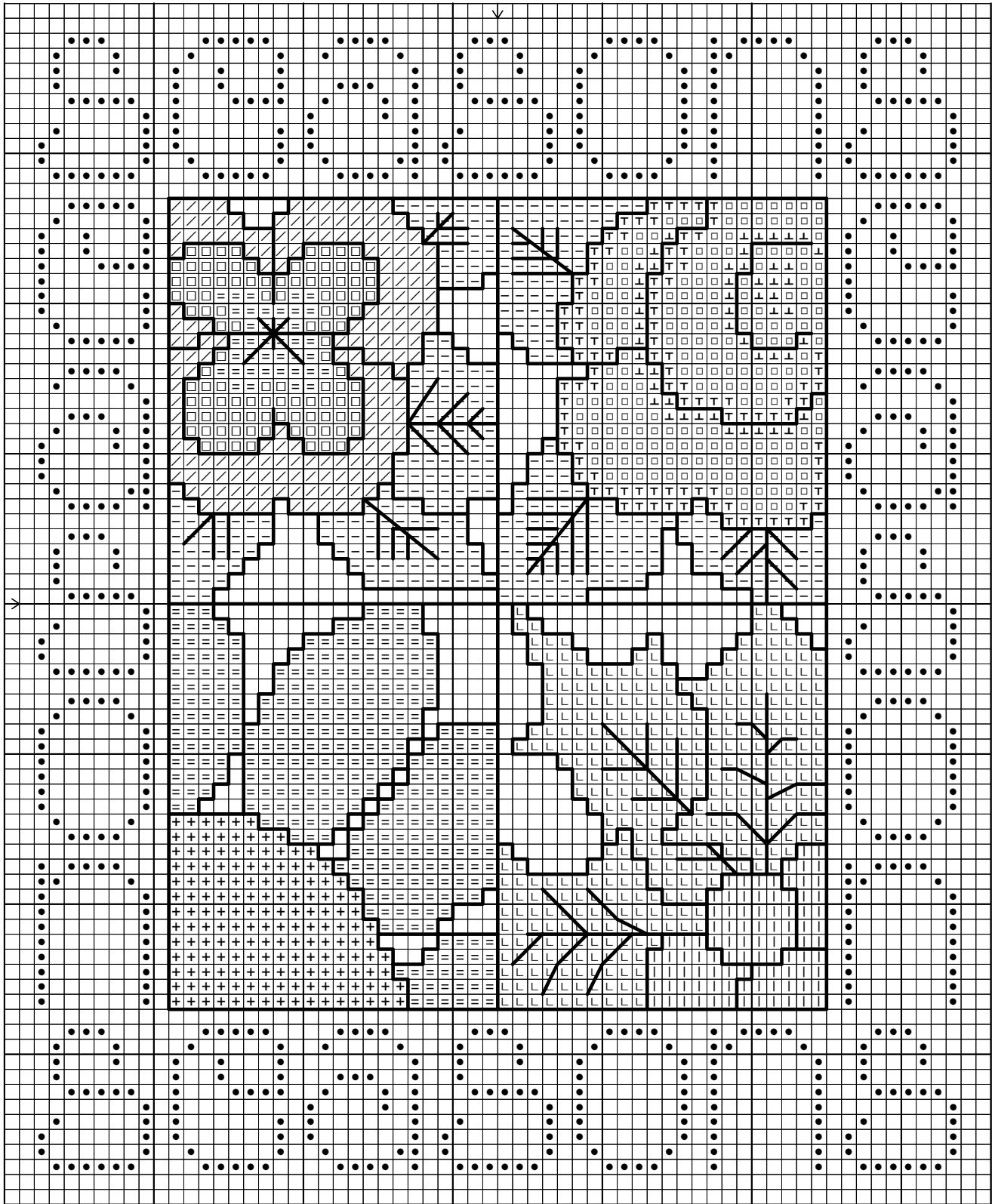
Used with Six Strand Sweets floss

Symbol	Color	Symbol	Color
⊥	Fruit Punch	=	Lemon Meringue
□	Organic Raspberries	+	Espresso
T	Organic Strawberries		Cherry Pie
L	Spice Drop	–	Double Mint
/	Grape Slushy	□	Black Licorice
●	Chocolate covered mint	BS	Black Licorice

Product sources –

Fabric: Wichelt Imports Inc.
 N. 162 Hwy 35
 Stoddard, WI 54658
 #76-135 28ct. Lambswool

Hand Dyed Threads: Six Strand Sweets 7405
 SE Tolman Street
 Portland, OR 97206
www.sixstrand sweets.com



This is a copy and share pattern. Please feel free to pass onto a stitching friend. It cannot be kitted, copied and sold, or displayed on personal websites without the permission of San-Man Originals. All rights reserved.

©2002 San-Man Originals